

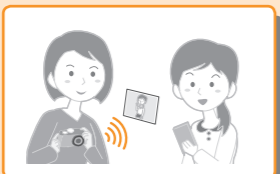
Wi-Fi® Quick Guide



● The camera cannot connect to public wireless LAN services (so-called Wi-Fi hotspots).

What you can do with a smartphone

● **Save pictures in the camera to a smartphone**
(Follow the instructions in this guide.)



● **Operate the camera remotely**
(Follow the instructions in this guide.)



Additional things you can do

- View pictures on a TV
- Send pictures to a PC
- Print wirelessly
- Send pictures to an AV device
- Send pictures in the camera to social networking services, etc. And more...

For details, please read “Owner’s Manual for advanced features” on the CD-ROM (supplied).

1 Getting started

Install the special app “Panasonic Image App” on your smartphone

- 1 Download the app**
 - iOS Launch App StoreSM
 - Android Launch Google PlayTM Store
- 2 Enter “Panasonic Image App” or “LUMIX” to search for the app**
- 3 Select and install “Panasonic Image App”**

- Use the latest version.
- The app is compatible with smartphones and tablets. In this guide, the term “smartphone” is used to refer to smartphones and tablets collectively.
- The app is referred to as “Image App” in this guide.

Supported Operating Systems (Current as of January 2014)

iOS	5.0 or later
Android	2.3.3 or later

- For the latest information on the “Image App”, refer to the support site below.
<http://panasonic.jp/support/global/cs/dsc/> (This site is available in English only.)

- App Store is a service mark of Apple Inc.
- Android and Google Play are trademarks or registered trademarks of Google Inc.
- “Wi-Fi”, “Wi-Fi Protected Setup”, “Wi-Fi Direct”, “WPA” and “WPA2” are marks or registered marks of the Wi-Fi Alliance.
- iPad, iPhone, and iPod touch are trademarks of Apple Inc., registered in the U.S. and other countries.
- QR Code is a registered trademark of DENSO WAVE INCORPORATED.
- Other names, company names, and product names mentioned in these instructions are trademarks or registered trademarks of the companies concerned.

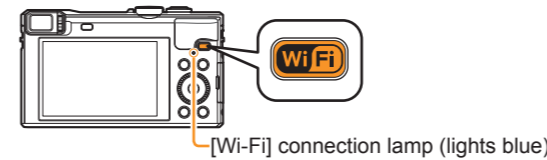
● The illustrations and screens in this guide may differ from the actual product.

2 Connecting to your smartphone

If you are using an iOS device (iPhone, iPod touch, iPad)

Use a QR code to make settings easily

- 1 Press and hold the [Wi-Fi] button on the camera**
The information needed for the connection is displayed.



- 2 Start “Image App” on the smartphone**
- 3 Select [QR code] → [OK]**
- 4 Read the QR code displayed on the camera in step 1 with “Image App” on the smartphone**
- 5 Install the IMAGE APP profile**



Select [Install]*, then select [Install Now]* → [Done]*.
The message is displayed in the Web browser.

- If a passcode is required to unlock the smartphone, you will have to input the passcode.

- 6 Press the home button to close the Web browser**

If you are using an Android™ device, see overleaf.

- 7 Select [Wi-Fi]* under [Settings]* on the smartphone**



- 8 Select the SSID displayed on the camera in step 1**



- 9 Return to the home screen and start “Image App”**
After the app starts, continue with step “3 Using the camera with a smartphone”.

- Steps 2 to 6 are not necessary when reconnecting.

■ You can also connect by manually entering the password.

After performing step 1 on the left:

- ① Select [Wi-Fi]* under [Settings]* on the smartphone
 - ② Select the SSID displayed on the camera in step 1
 - ③ Enter the password displayed on the camera in step 1 (First time connection only)
 - ④ Return to the home screen and start “Image App”
- It is not necessary to enter the password when reconnecting.

* The display may differ depending on the system language setting.

2 Connecting to your smartphone (continued)

If you are using an Android™ device

Is your device equipped with an NFC function?

Yes

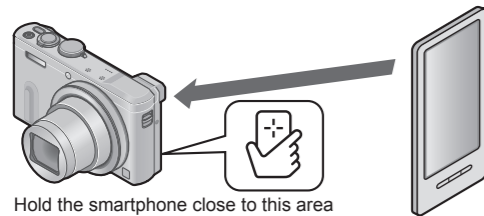
No

Use the NFC function to connect

- If [NFC] does not appear on the smartphone, the NFC function is disabled. Refer to the instruction manual of your smartphone and follow the steps indicated to enable the NFC function.
- This function can be used on Android (OS version 2.3.3 or later) devices that support NFC. (Some devices may not be compatible.)

1 Start “Image App” on your smartphone

2 While [NFC] is displayed on the connection screen of “Image App”, hold the smartphone close to the camera



Hold the smartphone close to this area (within 5 mm (0.20 inch))

3 When a message confirming connection to the smartphone is displayed on the camera, select [Yes] and press [MENU/SET]

4 Hold the smartphone close to the camera again

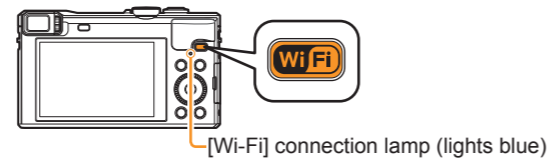
- Steps 3 and 4 are not necessary when reconnecting.

■About the NFC function

- You can still connect to the smartphone even if the camera is turned off. The camera lens may come out when the camera is turned on after making connection. Be careful that vibration does not cause the camera to drop.

Read a QR code to connect

1 Press and hold the [Wi-Fi] button on the camera



[Wi-Fi] connection lamp (lights blue)



SSID

QR code

Password

2 Start “Image App” on the smartphone

3 Select [QR code] on the “Image App” screen

4 Read the QR code displayed on the camera in step 1 with “Image App” on the smartphone

■You can also connect by manually entering the password.

After performing step 1 above:

- 1 Start “Image App” on the smartphone
- 2 Select [Wi-Fi] on the “Image App” screen
- 3 Select the SSID displayed on the camera in step 1
- 4 Enter the password displayed on the camera in step 1 (First time connection only)

- It is not necessary to enter the password when reconnecting.

If you check the item to display the password, you can confirm the password as you enter it.

3 Using the camera with a smartphone

Saving pictures in the camera to your smartphone

■Playing back and saving pictures remotely

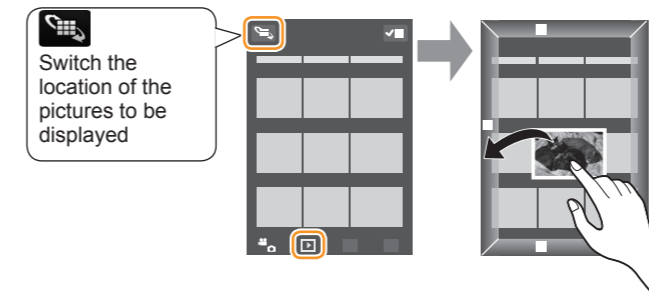
1 Start “Image App” on the smartphone

2 Select [▶] on the “Image App” screen

The images captured by the camera are displayed on the smartphone.

3 Press and hold a picture and drag it to save it on the smartphone

The picture is saved on the smartphone.



Switch the location of the pictures to be displayed

- It is not possible to save pictures in RAW file format or AVCHD motion pictures.
- 3D still pictures (MPO format) are saved as 2D still pictures (JPEG).

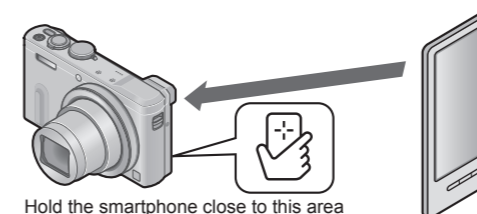
■Use the NFC function to save pictures

If you are using an iOS device (iPhone, iPod touch, iPad), the NFC function is not supported.

1 Play back pictures on the camera

2 Start “Image App” on your smartphone

3 While [NFC] is displayed on the connection screen of “Image App”, hold the smartphone close to the camera



Hold the smartphone close to this area (within 5 mm (0.20 inch))

- After connecting to the smartphone with the NFC function, pictures are saved via a Wi-Fi connection.
- To select and save multiple pictures, see “Playing back and saving pictures remotely” above.

Operating the camera remotely

■Recording pictures remotely

1 Start “Image App” on the smartphone

2 Select [▶] on the “Image App” screen



You can operate the zoom and press the shutter just like using a remote control.

- When you use zoom, the camera may tilt as the lens barrel extends. Make sure to secure the camera in place with a tripod or by other means.

■Playing back pictures remotely

1 Start “Image App” on the smartphone

2 Select [▶] on the “Image App” screen

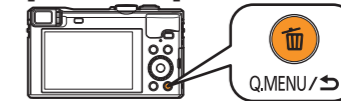


The images captured by the camera are displayed on the smartphone.

Closing the connection

After use, close the connection between the camera and smartphone.

1 Press [Q.MENU/↵] button on the camera, select [Yes] on the confirmation screen, and press [MENU/SET]



2 iOS From the “Image App” screen, press the home button on the smartphone to close the app

Android From the “Image App” screen, press the back button on the smartphone twice to close the app

Guide to support site

Find the latest information at our support site.
<http://panasonic.jp/support/global/cs/dsc/> (This site is available in English only.)